

# Port of Rotterdam Drayage Electrification Project

 Transportation & Logistics

 Netherlands

## Quick Overview

The aim is to decarbonize drayage operations that come through the Port of Rotterdam by electrifying freight shipping.

The Climate Pledge has collaborated with the Smart Freight Centre (SFC) to help electrify the Port of Rotterdam's drayage operations. Port drayage is the trucking of shipping containers over short distances, typically from a port, rail yard, or other facility to a final destination point, which can be a warehouse or another nearby location. The Climate Pledge is collaborating with SFC on this project to make it a leading example of the future we want to see for lower-emission heavy-duty road freight operations.

## Why This Project Matters

- Rotterdam is the largest container port in Europe, so any company moving containerized goods into or out of Europe can be impacted.
- Decarbonizing global freight operations is a challenging topic and companies need to collaborate in order to unlock faster progress.
- This is an important starting point for companies to decarbonize their heavy-duty trucking-freight operations.
- The Dutch government has a strong focus on lower-emission transport and is expected to provide further support for this project.

## Expected Results

- Remove hurdles and create conditions that enable drayage companies to offer lower-emission drayage solutions to their customers, including vehicle availability, charging infrastructure, and financing solutions.
- SFC will work with signatories to mobilize and secure demand for the use case, creating an opportunity for stakeholders to pave the way toward decarbonized port drayage operations.
- Demonstrate proof of concept in 2025 and scale-up similar initiatives in the European Union and North America.



## Companies Committed

 MAERSK

  
Join now

## Goal

Demonstrate the viability of the electrification of port drayage and scale the concept globally.

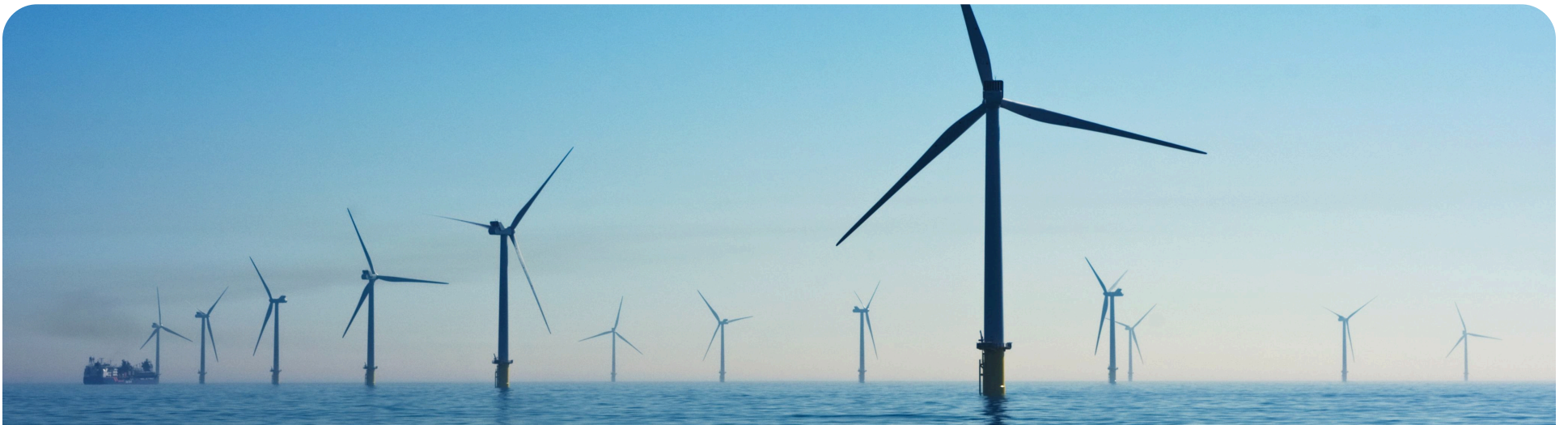




## Join This Project

Scan the QR code or visit [amzn.to/portofrotterdam](https://amzn.to/portofrotterdam) to let the Pledge team know you are interested in this project. Have questions? Contact us at [ccr-sustainability-spp@amazon.com](mailto:ccr-sustainability-spp@amazon.com).

Companies that are cargo owners, logistics service providers, and road freight carriers are encouraged to join.



## The Big Picture

The Climate Pledge launched a series of collaborative projects to help tackle some of the planet's biggest climate change challenges alongside the best in the business. These joint action projects bring signatories together to enable and scale a solution that aligns with the pillars of the Pledge and leads to measurable results.

Learn more at [theclimatepledge.com/jointaction](https://theclimatepledge.com/jointaction).



## The Pledge

The Climate Pledge is a commitment to reach net-zero carbon emissions by 2040. It brings the world's top companies together to accelerate joint action, cross-sector collaboration, and responsible change.

Learn more at [theclimatepledge.com](https://theclimatepledge.com).



## Smart Freight Centre

Smart Freight Centre (SFC) is an international non-profit organization focused on reducing the emissions of global freight transportation.

Learn more at [smartfreightcentre.org](https://smartfreightcentre.org)